

THE NOTHING IS FREE ECOLOFE

(Opportunity for Excellence)

Name:

Due:

Concept - There's no such thing as a free lunch.

What is ecology and provide at least one reason why it is important to study it? _____

What are the four important concepts in ecology we will be studying this year?

1.)	2.)
3.)	4.)

Please complete the following phrase. Energy cannot be created or _____ it can be _____ between systems and surroundings.

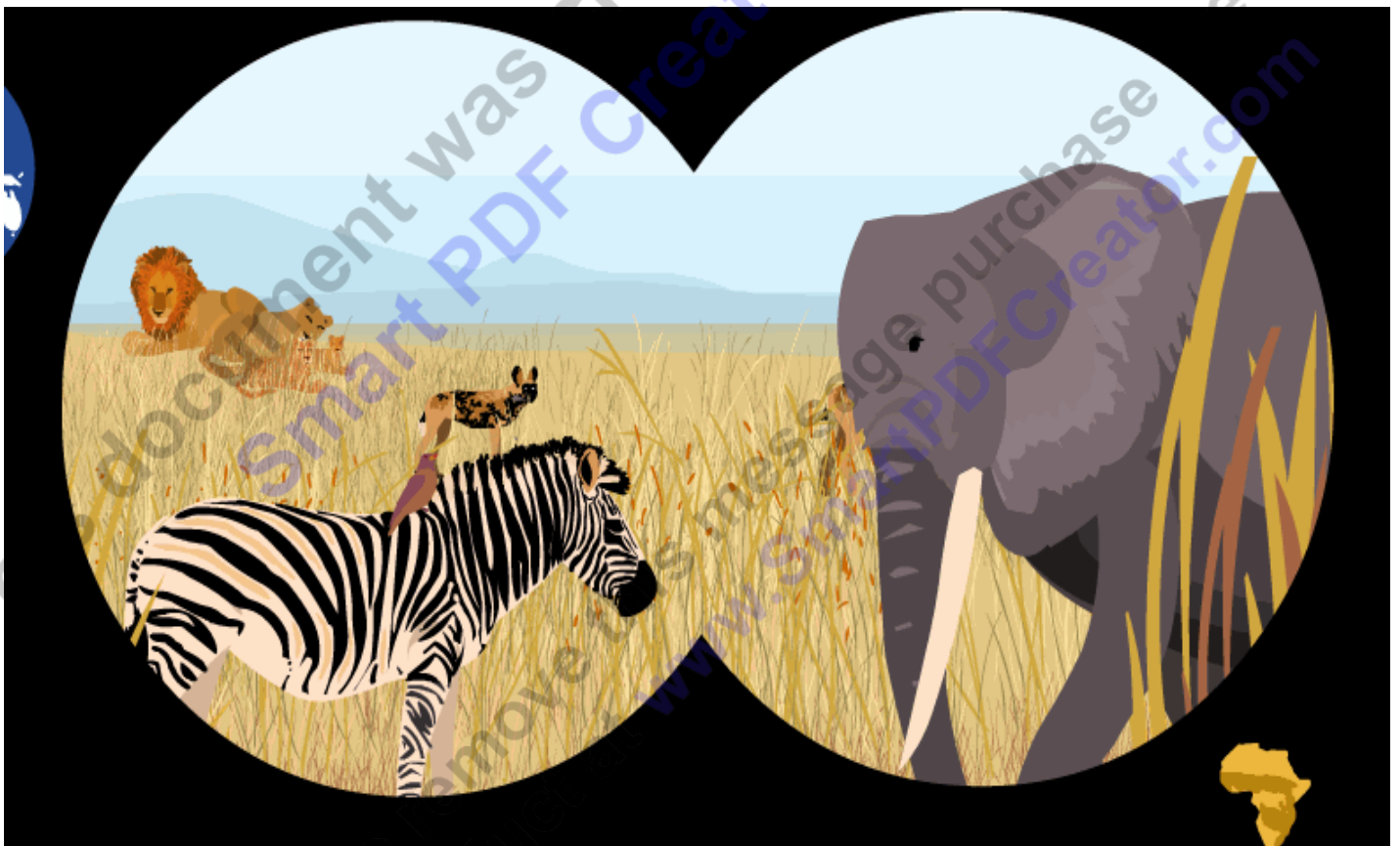
Please draw or describe three ways to destroy energy in the boxes below.

--	--	--

Please use the picture below to show where the energy on earth comes from.



While on safari, you look through your binoculars and see the grassland ecosystem. Please label the Producers, Consumers, 2nd order Consumers, and Scavengers. Try and draw a decomposer if you can.



Producers:

Consumers:

2nd Order Consumers:

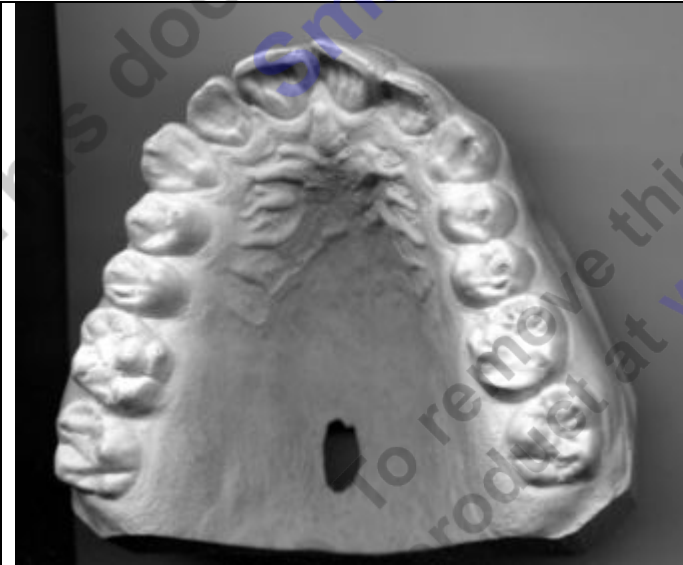
Decomposers

Scavengers:

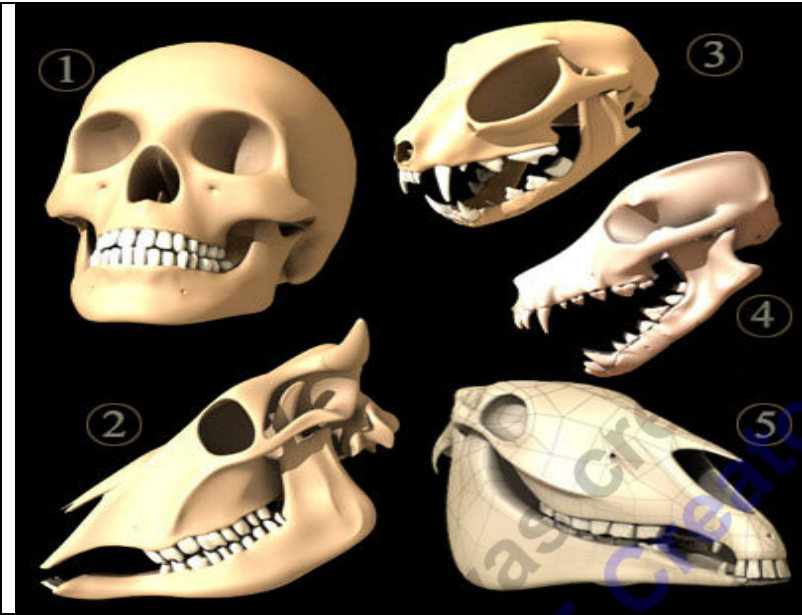
Complete the food web / chain with arrows showing energy flow through the ecosystem start to end. Then draw arrows showing who gets energy from whom.



Please label the following pictures of a human mouth with the correct dentition.

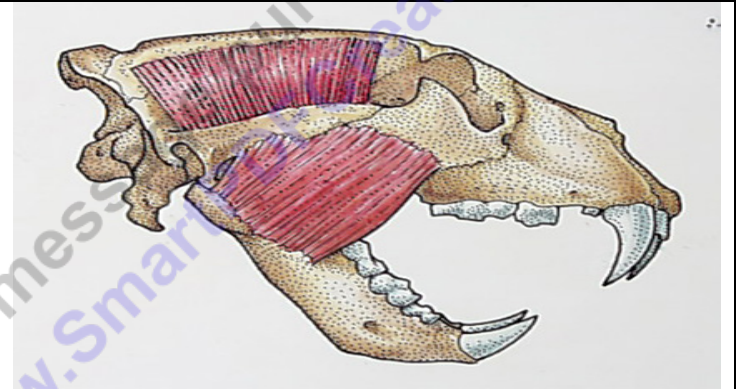


Please label the following skulls as herbivore, carnivore, or omnivore based on dentition and skull structure.



- 1.) _____
- 2.) _____
- 3.) _____
- 4.) _____
- 5.) _____

What can you identify on the skulls below?



To remove this message, purchase the product at www.SmartPrep.com

Please describe how the concept, There is no such things as free lunch relates to your bio-dome. Please be specific and accurate to your bio-dome. Work in the margins, above, and below. Make your illustrations in the container and use lines to show how those illustrations relate to your text.

Please include the following in your response.

- ◇ Describe how energy enters the bio-dome.
- ◇ Describe how heat leaves the bio-dome.
- ◇ Describe the producers and how they get energy.
- ◇ Describe some consumers in the bio-dome.
- ◇ Describe some decomposers in the bio-dome.

