

THE ORGANIC LIFE OF FE

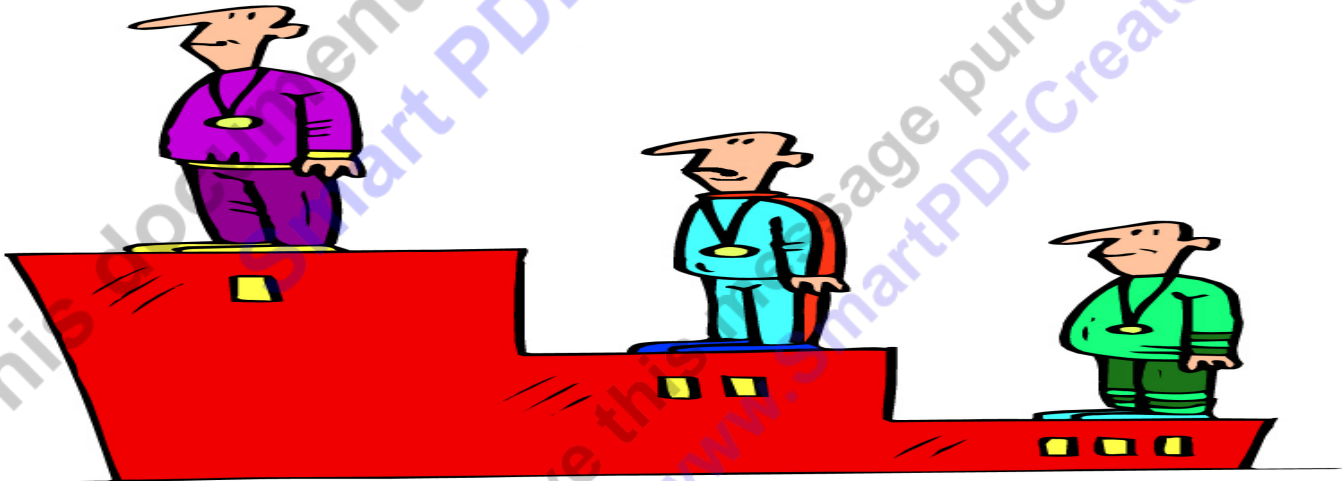
(Opportunity For Excellence)

Name:


Due:

These are the Biologically Important Elements
(These letters deserve to look cool, please put their names below)

If these athletes were biologically important Elements, which element is used the most (1st), 2nd, and 3rd in living things. Wet, not dry weight.



Please describe some simple and some complex sugars in the boxes below.

Name:	Name:	Name:	
-------	-------	-------	---

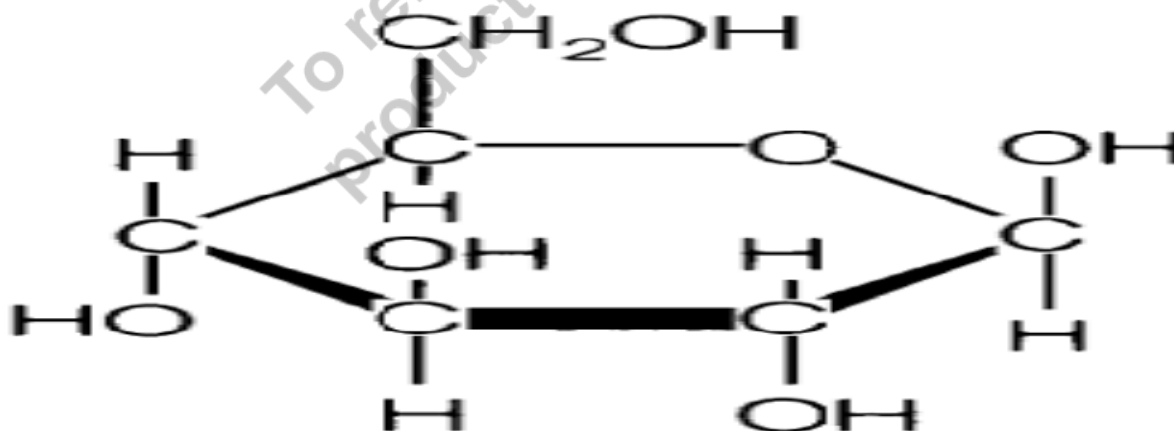
Please record in big letters the SPONCH elements that make up each of the important molecules below (1-5)

Carbohydrates and Lipids	Nucleic Acids, DNA and RNA	Amino Acids and Proteins
More complex Amino Acids and Proteins	Hydrocarbons	What is the CaFe in the SPONCH café?

Please circle the sugars from this word list: Sucrose, bisphosphatetase, lyseine, maltose, Xanthine, wet runny nose, hydroxysteriod, glucose, big furry moose, kinase, methylegluatryl, dhydrogenase, sucrose, lactose, galactose, nucleotide binding protein, deoxyribose, isomearase, dextrose, fructose, red caboose, my shoe lace has come loose, my favorite author is Dr. Seuss.

What is the ratio of Carbon, Hydrogen, and Oxygen in the glucose molecule below

Ratio _____:_____:



Please describe the type of carbohydrate that will give you a **quick burst of energy** but will not sustain your energy needs over a long period. Draw and describe, use the correct terms.

Please describe the type of carbohydrate that will give you **longer lasting energy** but it takes longer to digest. Please Draw and describe, and use the correct terms.

What are two other ways that sugars are utilized in the plant and animal world?

Describe the important roles that proteins play in human health.



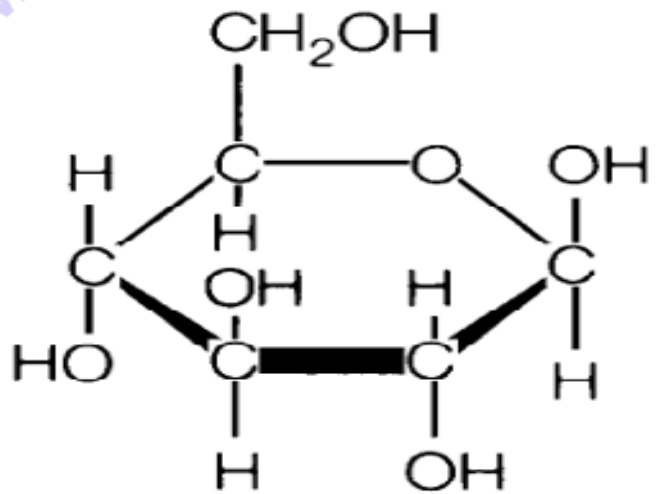
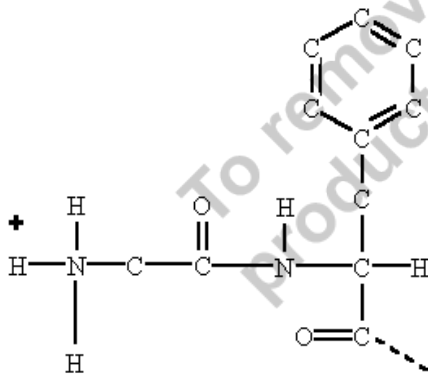
Describe the positives and negative health needs that lipids play on the human body next to the appropriate face below. Include steroid use in this answer.

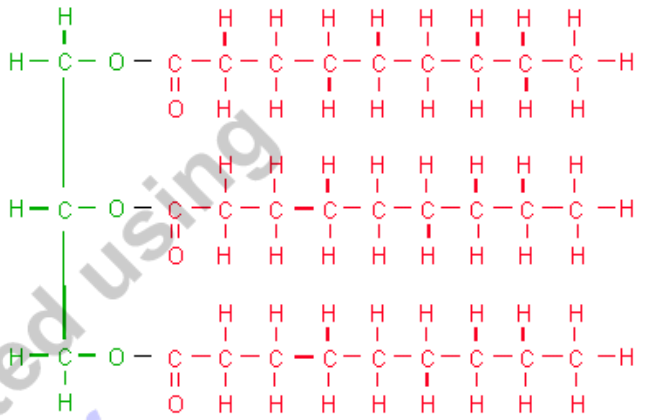
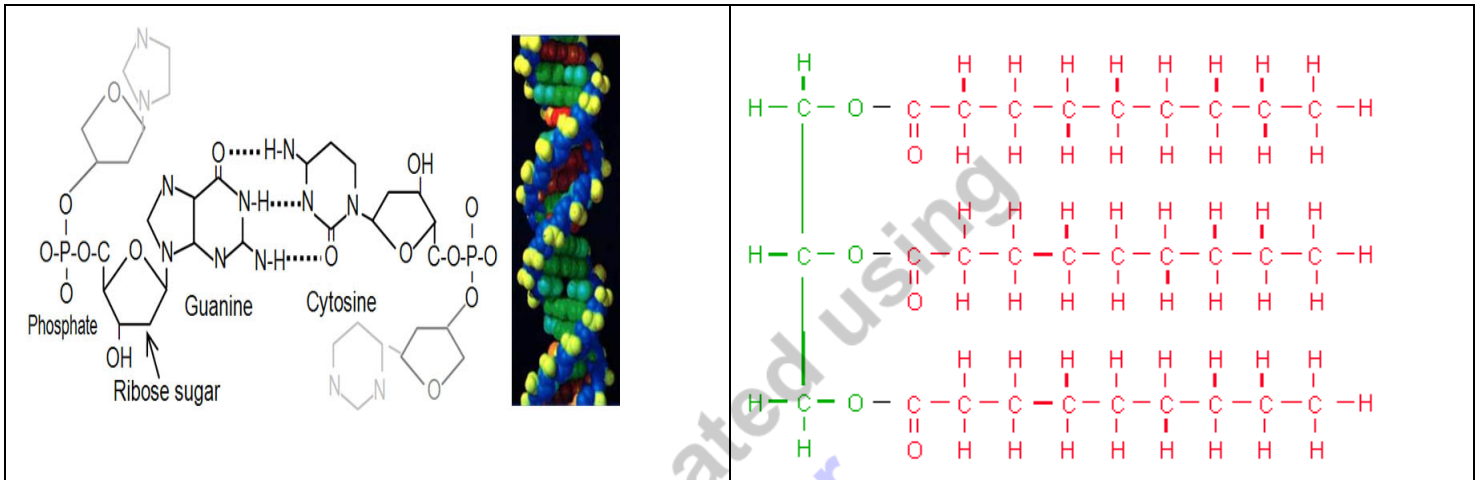


What are the dangers of being too big (obese) and too thin. Describe these effects next to correct picture below.



Please record the name of the correct biologically important molecules beneath the picture.

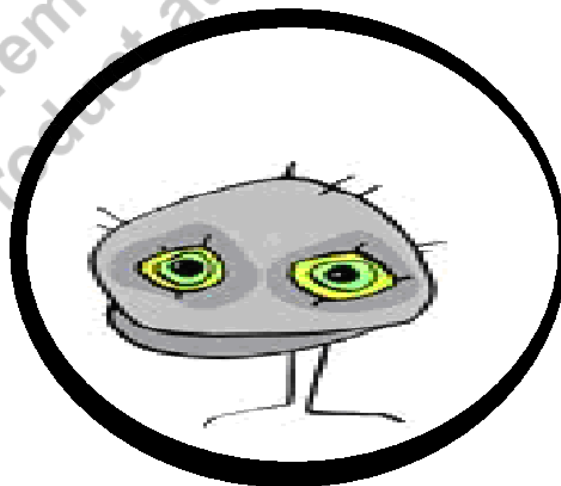




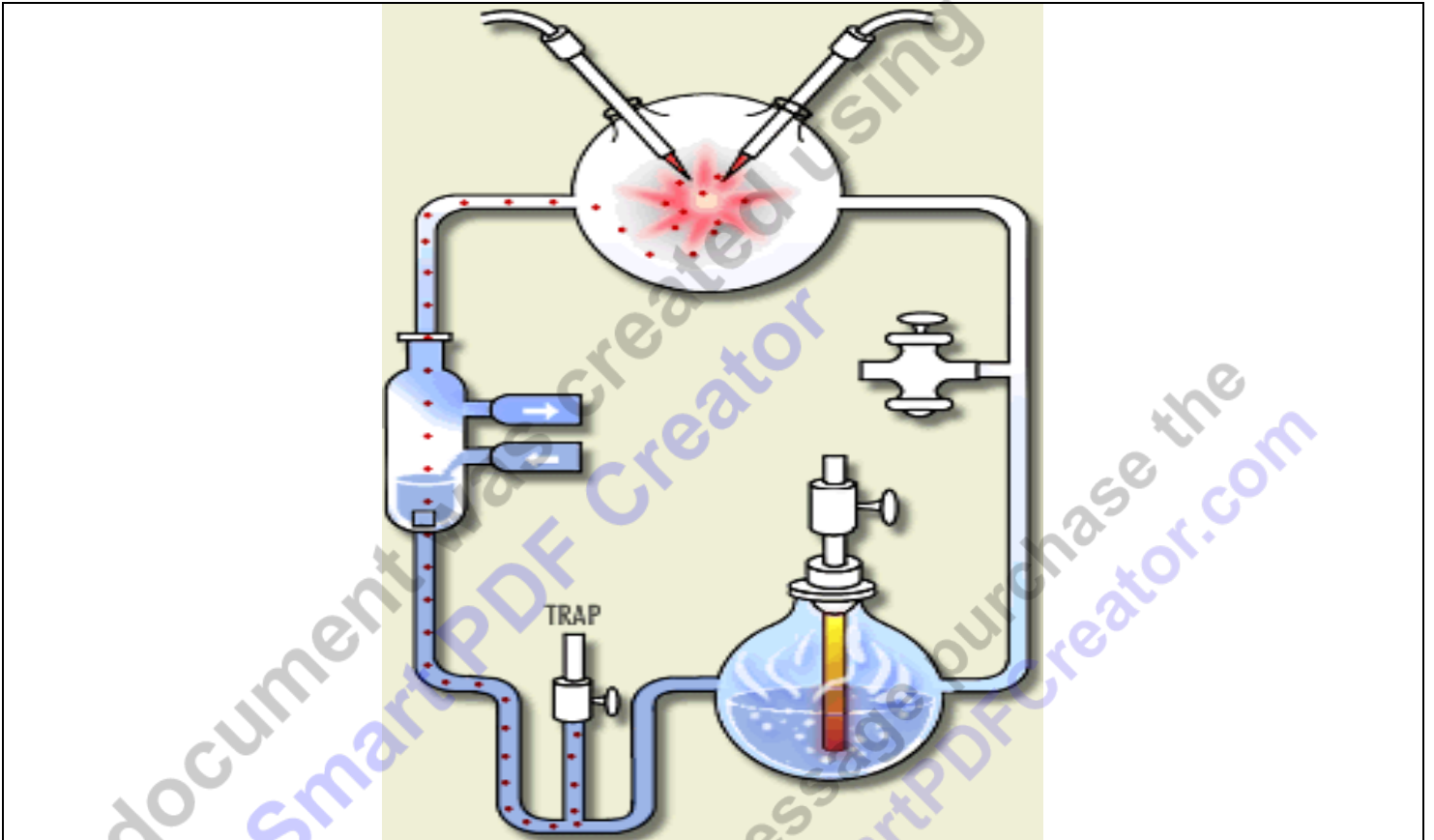
Please describe the health effects of eating "junk food" over long periods of time in the box below or describe the obesity epidemic in our country with a focus on the fast food industry.



While looking under the microscope, you observe the object below. How can you determine if it is a living creature? What will it need to survive if it is living?



Please describe as much as possible about Miller-Urey (1953) and their study concerning primitive earth. Please include the SPONCH elements where appropriate.



How did water aid in the origin of life? Don't forget, (Solvent, Medium, Participant)

Please describe why this family portrait is inaccurate according to earth system history



What is a hominid? How do archeologists know what they know?



Below is a copied page from a science textbook, please read this page about human evolution.

Evidence of Human Evolution

SKILLBUILDER

Interpreting Data

Scientists studied the chemicals found in four bacteria. The table shows the types of chemicals found in each type of bacteria. Each letter represents a different chemical. Use this data to determine which of the bacteria are closely related. If you need help, refer to the **Skill Handbook** on page 690.

Bacteria 1	A, G, T, C, L, E, S, H
Bacteria 2	A, G, T, C, L, D, K, H
Bacteria 3	A, G, T, C, L, D, P, U, S, R, I, V
Bacteria 4	A, G, T, C, L, D, H

Figure 17-14

A A monkey is able to hold fruit because it has opposable thumbs.



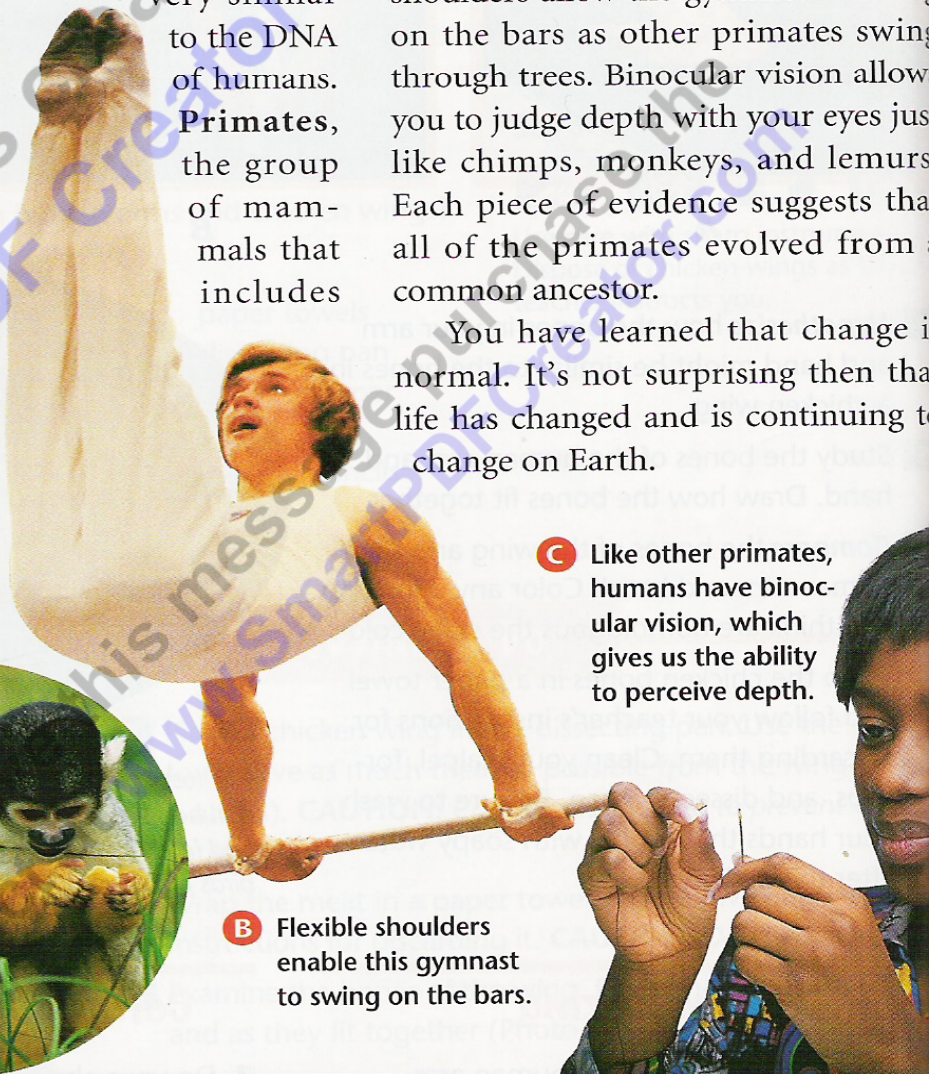
You know that the DNA of chimpanzees and gorillas has been found to be very similar to the DNA of humans. **Primates**, the group of mammals that includes

monkeys, apes, and humans, share many characteristics. Opposable thumbs allow you and other primates to grasp and hold objects. Flexible shoulders allow the gymnast to swing on the bars as other primates swing through trees. Binocular vision allows you to judge depth with your eyes just like chimps, monkeys, and lemurs. Each piece of evidence suggests that all of the primates evolved from a common ancestor.

You have learned that change is normal. It's not surprising then that life has changed and is continuing to change on Earth.

C Like other primates, humans have binocular vision, which gives us the ability to perceive depth.

B Flexible shoulders enable this gymnast to swing on the bars.



Did this page help you understand human evolution? What did it include, and what did it leave out? Should I teach human evolution from this book? _____
